

0 series gear speed reducer is made by high precision spiral gear, complete hermetic structure, special heat treatment, and lube immersion; so it has the advantages of high intension, high efficiency, anti-abrasive, and low noise, etc. It has three national patents. It serves for reducing mechanism of medium speed, medium power DC motor. It can operate continuously.

6 series gear speed reducer is made by high precision spiral gear, complete hermetic structure, special heat treatment, and lube immersion; so it has the advantages of high intension, high efficiency, anti-abrasive, and low noise, etc. It has three national patents. It serves for reducing mechanism of high speed, large power DC motor. It can operate continuously.



Don't disassemble or assemble the assembled gear head to prevent the bad noise.

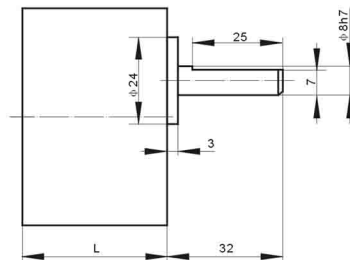
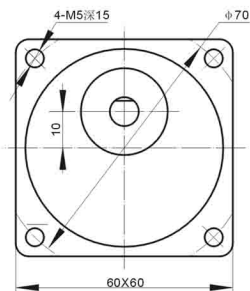
Don't beat or squeeze when connect the gear head extend axle to load to avoid the phenomena of bad noise or locked dead that caused by deformation and dislocation.

# 60JB

Size:60mm



ratio	L mm	output axle direction of rotation	ratio	L mm	output axle direction of rotation
1:3	32		1:60	40	
1:3.6			1:75		
1:5			1:90		
1:6			1:100		
1:7.5			1:120		
1:10			1:150		
1:12.5			1:180		
1:15			1:200		
1:18			1:250		
1:20			40		
1:25	1:360				
1:30	1:400				
1:36	1:500				
1:40	1:600				
1:50					



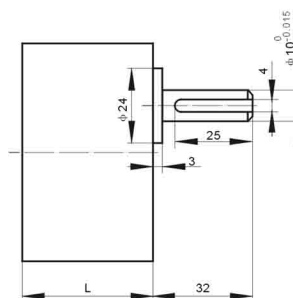
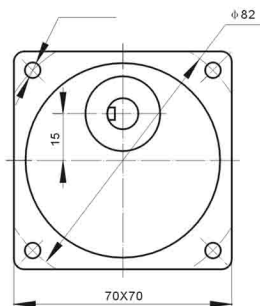
60JB gear speed reducer is suitable for motor's reducing mechanism whose power is up to 10W. Common specification of reduction ratio and output shaft turning sees the table. Special reduction ratio can be made as per user's demand. Gear speed reducer whose specification is 1:200~1:600, and is commonly used for attain low speed. Please request if you need large torque output.

# 70JB

Size:70mm



ratio	L mm	output axle direction of rotation	ratio	L mm	output axle direction of rotation
1:3	32		1:60	42	
1:3.6			1:75		
1:5			1:90		
1:6			1:100		
1:7.5			1:120		
1:10			1:150		
1:12.5			1:180		
1:15			1:200		
1:18			1:250		
1:20			42		
1:25	1:360				
1:30	1:400				
1:36	1:500				
1:40	1:600				
1:50					



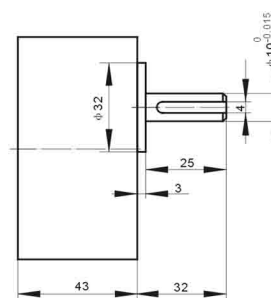
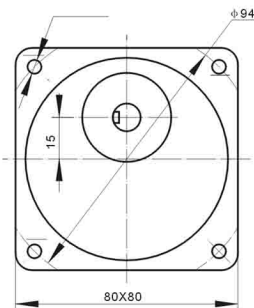
70JB gear speed reducer is suitable for motor's reducing mechanism whose power is up to 20W. Common specification of reduction ratio and output shaft turning sees the table. Special reduction ratio can be made as per user's demand. Gear speed reducer whose specification is 1:200~1:600, and is commonly used for attain low speed. Please request if you need large torque output.

# 80JB

Size:80mm



ratio	L mm	output axle direction of rotation	ratio	L mm	output axle direction of rotation
1:3	43		1:60	43	
1:3.6			1:75		
1:5			1:90		
1:6			1:100		
1:7.5			1:120		
1:10			1:150		
1:12.5			1:180		
1:15			1:200		
1:18			1:250		
1:20			1:300		
1:25			1:360		
1:30			1:400		
1:36			1:500		
1:40			1:600		
1:50					



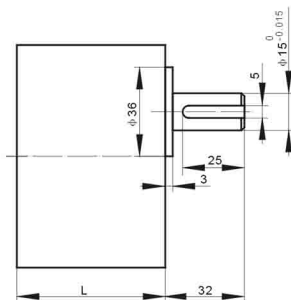
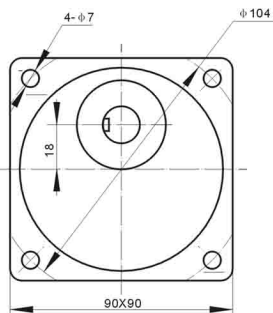
80JB gear speed reducer is suitable for motor's reducing mechanism whose power is up to 30W. Common specification of reduction ratio and output shaft turning sees the table. Special reduction ratio can be made as per user's demand. Gear speed reducer whose specification is 1:200~1:600, and is commonly used for attain low speed. Please request if you need large torque output. There are two turnings to be selected as per gear's inner collocable methods if the specification of gear speed reducer is 1:200.

# 90JB

Size:90mm



ratio	L mm	output axle direction of rotation	ratio	L mm	output axle direction of rotation
1:3	42		1:30	60	
1:3.6			1:36		
1:5			1:40		
1:6			1:50		
1:7.5			1:60		
1:10			1:75		
1:12.5			1:90		
1:15			1:100		
1:18	60		1:120		
1:20			1:150		
1:25			1:180		



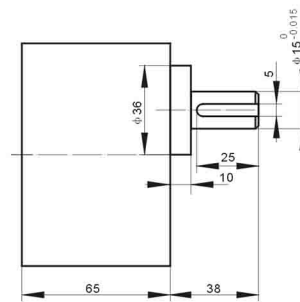
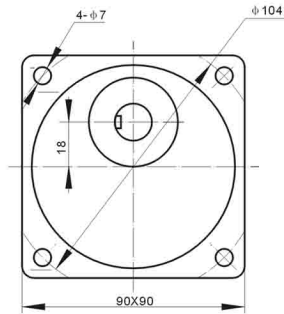
90B gear speed reducer is suitable for motor's reducing mechanism whose power is up to 60W. Common specification of reduction ratio and output shaft turning sees the table. Special reduction ratio can be made as per user's demand.

# 90JB-B

Size:90mm



ratio	L mm	output axle direction of rotation	ratio	L mm	output axle direction of rotation
1:3	65		1:30	65	
1:3.6			1:36		
1:5			1:40		
1:6			1:50		
1:7.5			1:60		
1:10			1:75		
1:12.5			1:90		
1:15			1:100		
1:18			1:120		
1:20			1:150		
1:25			1:180		



GEAR HEAD

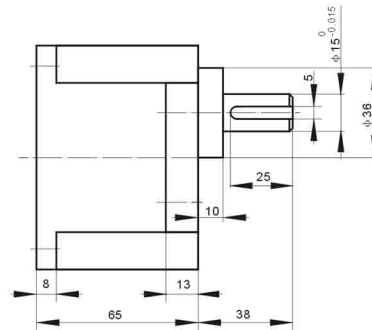
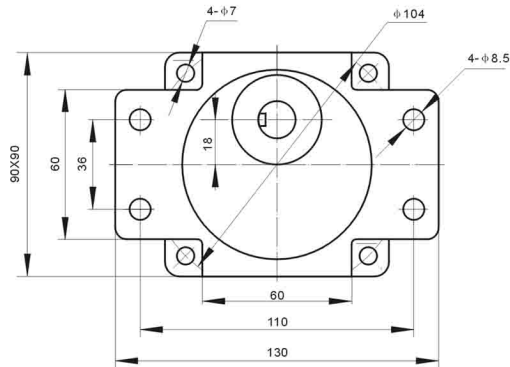
90JB-B gear speed reducer is suitable for motor's reducing mechanism whose power is up to 120W. Common specification of reduction ratio and output shaft turning sees the table. Special reduction ratio can be made as per user's demand.

# 90JB-BE

Size:90mm



ratio	L mm	output axle direction of rotation	ratio	L mm	output axle direction of rotation
1:3	65		1:30	65	
1:3.6			1:36		
1:5			1:40		
1:6			1:50		
1:7.5			1:60		
1:10			1:75		
1:12.5			1:90		
1:15			1:100		
1:18			1:120		
1:20			1:150		
1:25			1:180		



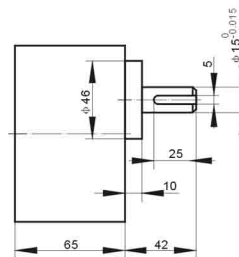
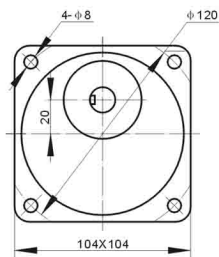
90JB-BE gear speed reducer is suitable for motor's reducing mechanism whose power is up to 120W. Common specification of reduction ratio and output shaft turning sees the table. Special reduction ratio can be made as per user's demand.

# 100JB

Size:100mm



ratio	L mm	output axle direction of rotation	ratio	L mm	output axle direction of rotation
1:3	65		1:30	65	
1:3.6			1:36		
1:5			1:40		
1:6			1:50		
1:7.5			1:60		
1:10			1:75		
1:12.5			1:90		
1:15			1:100		
1:18			1:120		
1:20			1:150		
1:25			1:180		



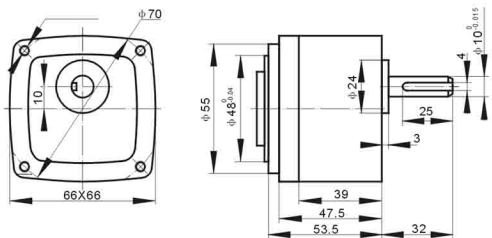
100JB gear speed reducer is suitable for motor's reducing mechanism whose power is up to 140W. Common specification of reduction ratio and output shaft turning sees the table. Special reduction ratio can be made as per user's demand.

# 66/76JB

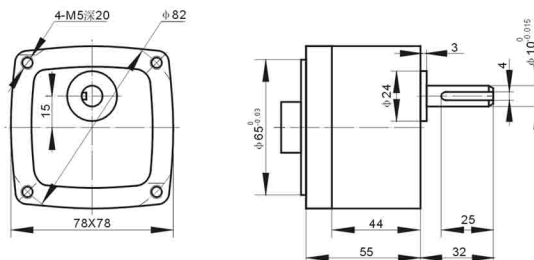
Size:66/76mm



Type	ratio	1:5	1:7.5	1:12.5	1:20	1:30	1:50	1:75	1:100
66JB									
76JB									



66JB



76JB

66JB gear speed reducer is suitable for motor's reducing mechanism whose power is up to 20W. Common specification of reduction ratio and output shaft turning sees the table. Special reduction ratio can be made as per user's demand.

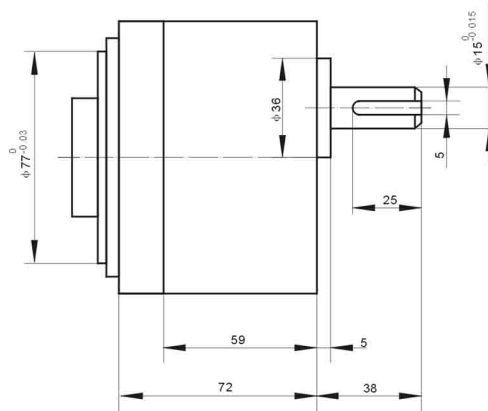
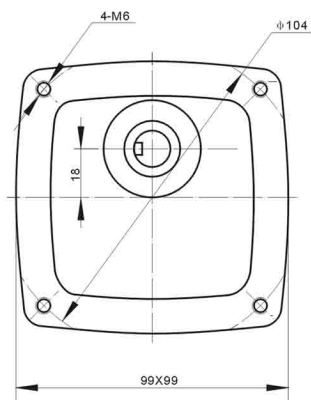
76JB gear speed reducer serves for motor's reducing mechanism whose power is lower than 30W. Common specification of reduction ratio and outer shaft turning see the table. Special reduction ratio can be made according to user's demand.

# 96JB

Size:96mm



ratio	1:7.5	1:10	1:20	1:30	1:60	1:80	1:100	1:150



GEAR HEAD

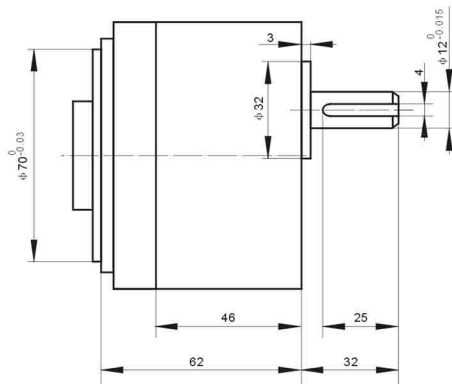
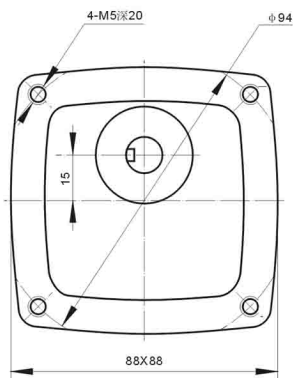
96JB gear head is suitable for motor reducing mechanism whose power is lower than 60W. Common specification or reduction ratio and outer shaft turning see the table. Special reduction ratio can be made according to user's demand.

# 86JB

Size:86mm



ratio	1:9	1:20	1:30	1:60	1:75	1:100	1:120	1:150



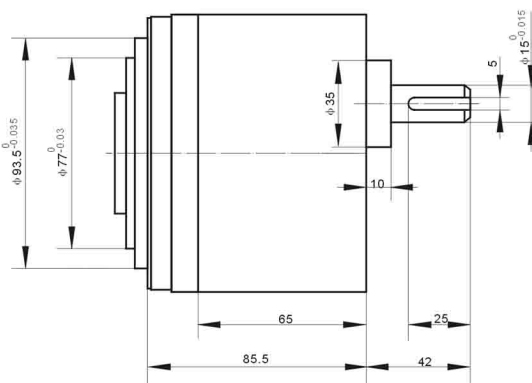
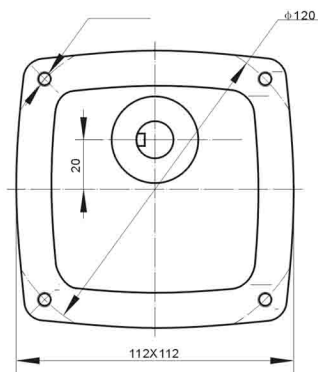
86JB gear speed reducer serves for motor's reducing mechanism whose power is lower than 40W. Common specification of reduction ratio and outer shaft turning see the table. Special reduction ratio can be made according to user's demand.

# 106JB

Size:106mm



ratio	1:10	1:20	1:30	1:40	1:50	1:60	1:70	1:80



106JB gear speed reducer is suitable for motor's reducing mechanism whose power is up to 90W. Common specification of reduction ratio and output shaft turning sees the table. Special reduction ratio can be made as per user's demand.

HENGDIAN GROUP LINIX MOTOR CO., LTD.  
Add.: No.96 Renmin Rd., Dongyang, Zhejiang  
China 322100  
Tel: +86-579-6630197  
Fax: +86-579-6630757  
E-mail: [031@linix.com.cn](mailto:031@linix.com.cn) (Ying Honghui)  
Website: <http://www.eastsources.com>